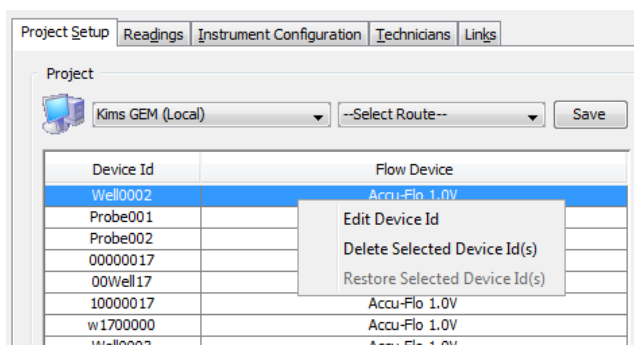
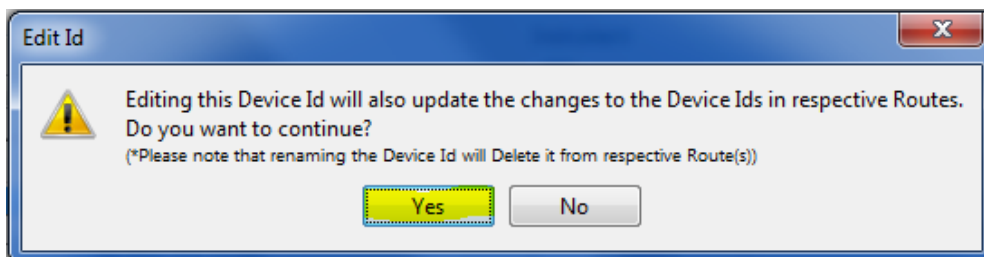


## How to Add an ID Question

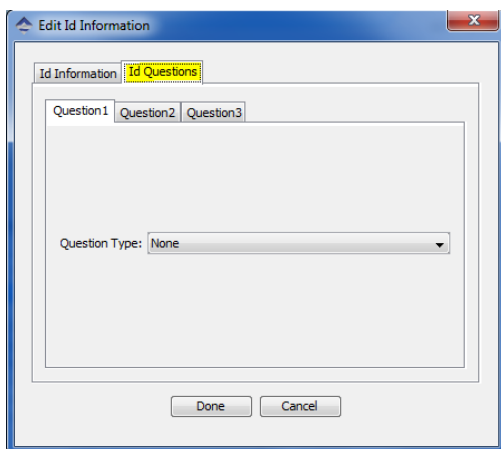
Right click on an ID and select “Edit Device ID”



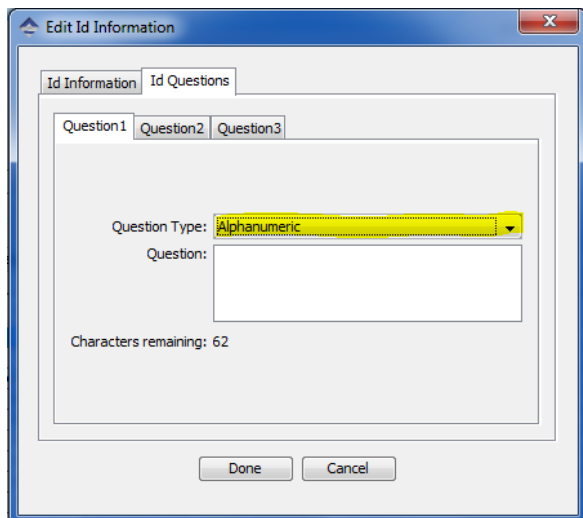
Select “Yes”



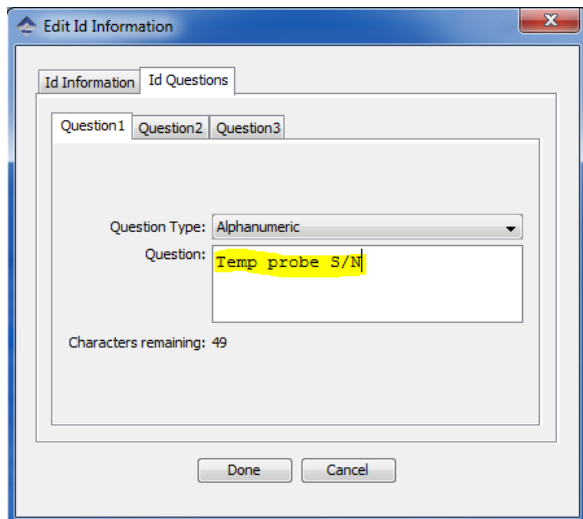
Select “ID Questions” tab



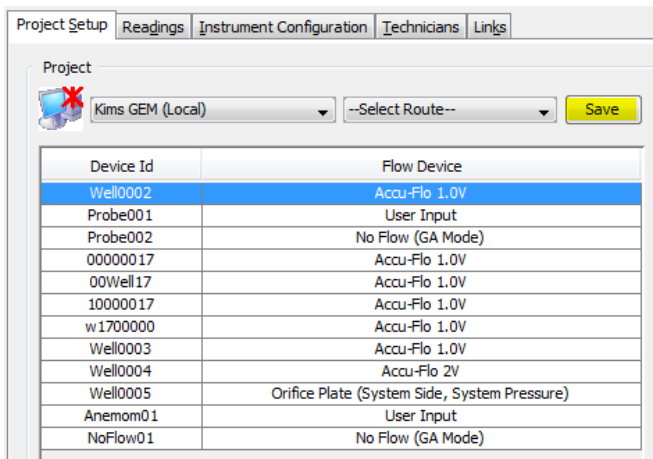
From Question Type drop down menu select “Alphanumeric”



Enter Question then click “Done” button

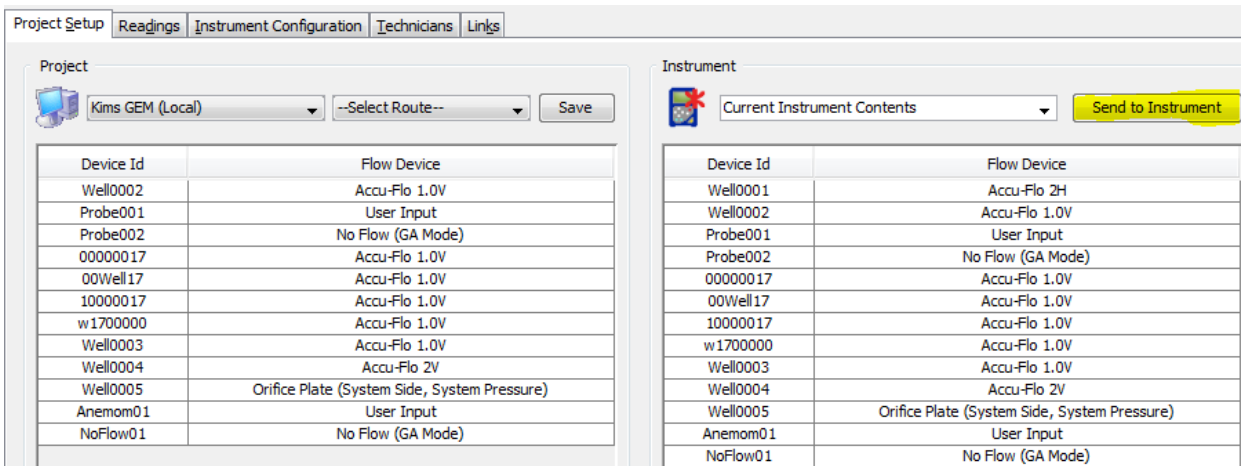


Click “Save” button



Device Id	Flow Device
Well0002	Accu-Flo 1.0V
Probe001	User Input
Probe002	No Flow (GA Mode)
00000017	Accu-Flo 1.0V
00Well17	Accu-Flo 1.0V
10000017	Accu-Flo 1.0V
w1700000	Accu-Flo 1.0V
Well0003	Accu-Flo 1.0V
Well0004	Accu-Flo 2V
Well0005	Orifice Plate (System Side, System Pressure)
Anemom01	User Input
NoFlow01	No Flow (GA Mode)

Click “Send to Instrument” button



Device Id	Flow Device
Well0002	Accu-Flo 1.0V
Probe001	User Input
Probe002	No Flow (GA Mode)
00000017	Accu-Flo 1.0V
00Well17	Accu-Flo 1.0V
10000017	Accu-Flo 1.0V
w1700000	Accu-Flo 1.0V
Well0003	Accu-Flo 1.0V
Well0004	Accu-Flo 2V
Well0005	Orifice Plate (System Side, System Pressure)
Anemom01	User Input
NoFlow01	No Flow (GA Mode)

Device Id	Flow Device
Well0001	Accu-Flo 2H
Well0002	Accu-Flo 1.0V
Probe001	User Input
Probe002	No Flow (GA Mode)
00000017	Accu-Flo 1.0V
00Well17	Accu-Flo 1.0V
10000017	Accu-Flo 1.0V
w1700000	Accu-Flo 1.0V
Well0003	Accu-Flo 1.0V
Well0004	Accu-Flo 2V
Well0005	Orifice Plate (System Side, System Pressure)
Anemom01	User Input
NoFlow01	No Flow (GA Mode)

This question will be asked the next time you select this ID.

Note: You will need to perform this for each ID that you wish to add an ID question to.